

PLANTEX[®] Flap Discs

**INDUSTRY FIRST! NEW ECO-FRIENDLY
PLANTEX DISCS WITH INDUSTRIAL
PROTECTED HEMP BACKING**

PLANTEX[®] INDUSTRIAL HEMP FLAP DISCS

**Renewable Resource
Environmentally Sustainable**

**More Impact Resistant
vs. Fiberglass**

**Plant-Based Hemp
Backing Plate**

**Built-in Easy Spin-on
5/8" x 11**

Absorbs Heat & Sound

**Trimmable for
Extended Life**



SUPERIOR PERFORMANCE

Made in Germany 

- **Internationally Protected unique Formula: Optimal grinding, blending, & finishing**
- **Eco-Friendly: 50% less energy is used in production of PLANTEX Discs**
- **100% Usable flaps, down to the backing**

COMPETITIVELY PRICED



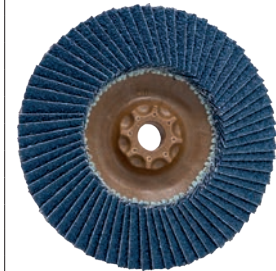
High performance, patented grain & design that excels on stainless steel, carbon steel, & heat sensitive alloys providing extra long-life. (Type 29)



Part No.	Diameter	Arbor	Grit	QTY
93520	4-1/2"	5/8" x 11 Spin On	Multigrain 40/60	10 Pack
93519	4-1/2"		80	
93521	5"		Multigrain 40/60	
93523	5"		80	
93516	6"	7/8"	Multigrain 40/60	
93517	6"	7/8"	80	

A premium zirconia grain for use on carbon steel and stainless steel. High metal removal rates and long life. (Type 29)

Part No.	Diameter	Arbor	Grit	QTY
93564	4-1/2"	5/8" x 11 Spin On	40	10 Pack
93566	4-1/2"		60	
93568	4-1/2"		80	
93569	4-1/2"		120	
93574	5"		40	
93576	5"		60	
93578	5"		80	
93579	5"		120	
93499	6"	7/8"	40	
93500	6"		60	
93501	6"		80	
93502	6"		120	



A zirconia grain for use on carbon steel & stainless steel, overhang excels for corners & tight areas, for fast cut & long-life- an excellent value. (Type 29)

Part No.	Diameter	Arbor	Grit	QTY
93485	4-1/2"	5/8" x 11 Spin On	Multigrain 40/60	10 Pack
93486	4-1/2"		80	
93488	5"		Multigrain 40/60	
93489	5"		80	



↑
Overhang

A special grain & formula to grind & blend aluminum and other non-ferrous materials while minimizing loading and providing long-life. (Type 29)

Part No.	Diameter	Arbor	Grit	QTY
93854	4-1/2"	5/8" x 11 Spin On	40	10 Pack
93856	4-1/2"		60	
93858	4-1/2"		80	
93859	4-1/2"		120	
93864	5"		40	
93866	5"		60	
93868	5"		80	
93869	5"		120	



FIX HOOK & LOOP SYSTEM

PATENTED!

Highly flexible backing disc for high-quality finishes. Ideal for surface conditioning and polishing up to a mirror finish.

The FIX Hook & Loop system takes advantage of a flexible backing pad and allows a disc to be changed in seconds without tools.

The FIX Hook & Loop system is a good fit wherever disc flexibility and frequent changeover are required. It will save time in industrial metalworking applications such as car body shops and repair shops.

The system requires a speed-controlled angle grinder, such as the VARILEX®. A wide range of abrasives are available for all steps – from rough grinding up to a mirror finish.

The FIX Hook & Loop's "green" backing disc is made of natural materials. The flexibility of the abrasives allows you to achieve results similar to stationary grinding machines.



The FIX family of abrasives must be used with the FIX original backing pads.

The FIX Hook & Loop system is an essential surface finishing and polishing system for all sheet metal applications.

FIX Hook & Loop System Kits

FIX Starter Kit

This kit includes a range of FIX Hook & Loop components, as well as a VARILEX® WSF 1802 Angle Grinder. **Part No. 80050U**

- 1 VARILEX® WSF 1802 HT, 110V, 5/8" spindle
- 1 Carrying case
- 1 FIX backing pad - 4-7/16"
- 1 Wheel guard for discs up to 5"
- 3 FIX fleece discs 4-1/2" (1 each - coarse, medium, fine)
- 1 EASY-LOCK SPEED NUT
- 2 FIX FLEECE TOP 4-1/2" (1 each - grit 80, 180)
- 2 FIX flap discs 4-1/2" (1 each - grit 40, 60)
- 2 FIX SuperPolish discs 4-1/2"
- 1 FIX clean 4-1/2"
- 1 PTX Brightex® Softclean Powder scatter can
- 4 FIX Zirconium discs 4-1/2" (1 each - grit 40 - 120)
- 2 Mini-polishing pastes, white and blue

FIX Test Kit

This kit contains all the FIX Hook & Loop System components to go from rough grinding up to a mirror finish. **Part No. 80051U**

- 1 Carrying case
- 1 FIX backing pad
- 8 FIX Zirconium discs 4-1/2" (2 each - 40, 60, 80, 120 grit)
- 10 FIX TZ Pyramid discs 4-1/2" (2 each - 280, 400, 600, 1200, 2000 grit)
- 8 FIX Surface Conditioning discs 4-1/2" (2 each - coarse, medium, fine, superfine)
- 6 FIX SuperPolish discs 4-1/2"
- 2 Mini-polishing pastes, white and blue
- 1 PTX polishing cream pink
- 1 PTX Brightex® Softclean Powder scatter can
- 2 PTX microfiber cloths
- 1 Sample size PTX Poly Protection
- 1 Sample size PTX Brilliance Clean



↓ TIPS & TRICKS

Perfect mirror finish on stainless steel and nonferrous metals

The new TZ Pyramid and SuperPolish discs for the FIX Hook & Loop system can be used with an angle grinder to create perfectly polished finishes on stainless steel and nonferrous metals.

Pre-grinding to remove scratches and level welds using TZ Pyramid discs with grit A30.

Fine grinding using TZ Pyramid discs with grit A16.

These two stages prepare the surface for polishing. TZ Pyramid is an aggressive abrasive, so there is no need to slowly increase the grit fineness. Use only contact pressure to grind – the weight of the grinder is generally sufficient.

Pre-polish with SuperPolish disc and white polishing compound.

Main polish with SuperPolish disc and blue polishing compound.

Perfect mirror finish with SuperPolish disc and pink cream.

Use a separate SuperPolish disc for each step – the different compound grits must not be mixed. Remove compound and cream residues after each stage using PTX Brightex® Softclean Powder and a microfiber cloth.

Abrasives for the FIX Hook & Loop System

The FIX family of abrasives must be used with the FIX original backing disc.



FIX Backing Pads with Centering Pin

For use with the FIX Zirconium, FIX TZ and FIX SuperPolish discs. The backing disc is made of special elastic with a centering pin for perfect alignment.

Without Foam:

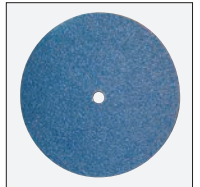
Diameter: 4.5" with 5/8"-11 thread – Part No. 80115U

Diameter: 6" with 5/8"-11 thread – Part No. 80150U

With 1/4" PUR Foam absorptive coating:

Diameter: 4.5", 5/8"-11 thread – Part No. 80115UF

Diameter: 6", 5/8"-11 thread – Part No. 80150UF



FIX Zirconium Disc

Abrasive disc with Hook & Loop fastening and an outstanding grinding capacity. Ideal for body shops and car workshops.

FIX Zirconium Disc Ordering Information

Part No.	Diameter	Grit	Quantity
80904	4 1/2"	40	50 pack
80906		60	
80908		80	
80909		120	
80914	6"	40	50 pack
80916		60	
80918		80	
80919		120	



FIX Fleece (Nonwoven) Disc

Versatile disc for fine surface conditioning and pre-polishing.

FIX Fleece (Nonwoven) Disc Ordering Information

Part No.	Diameter	Grit	Quantity
80615	4 1/2"	coarse (brown)	10 pack
80616		medium (red)	
80617		fine (blue)	
80618		superfine (grey)	
80650	6"	coarse (brown)	10 pack
80651		medium (red)	
80652		fine (blue)	
80653		superfine (grey)	

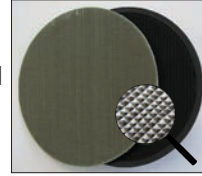


FIX (Nonwoven) Disc

The new FIX-Klett disc is a superfine soft nylon-fleece material for pre-polishing aluminum or other soft, nonferrous materials to a mirror finish.

Diameter: 4-1/2"; Superfine grit, Part No. 80680 (10 pack)

Diameter: 6"; Superfine grit, Part No. 80690 (10 pack)



FIX TZ Pyramid Disc

Abrasive fabric with pyramid-shaped grit structure for high material removal while producing a very fine finish. FIX TZ Pyramid discs reduce the amount of work required compared to grinding belt and

fleece sleeves. Ideal for pre-polishing for mirror finishes and for removing scratches and spot welds. An additional coating dramatically reduces the grinding temperature and protects the Hook & Loop components and workpiece.

FIX TZ Disc Ordering Information

Part No.	Diameter	Grit/Equivalent	Quantity
80932	4 1/2"	A65/280	10 pack
80940		A45/400	
80960		A30/600	
80970		A16/1200	
80980		A06/2000	
80985	6"	A65/280	10 pack
80986		A45/400	
80987		A30/600	
80988		A15/1200	
80989		A06/2000	



FIX SuperPolish Disc

SuperPolish is a special needle fleece that produces a perfect, brilliant mirror finish on stainless steel and nonferrous metals. Use with our polishing compounds (white and blue)

and pink cream to avoid smears and shadows. SuperPolish is absorbent, does not smear and saves time.

Diameter: 4-1/2"; Thickness: 1/4", Part No. 80715N (10 pack)

Diameter: 6"; Thickness: 1/4", Part No. 80750N (10 pack)



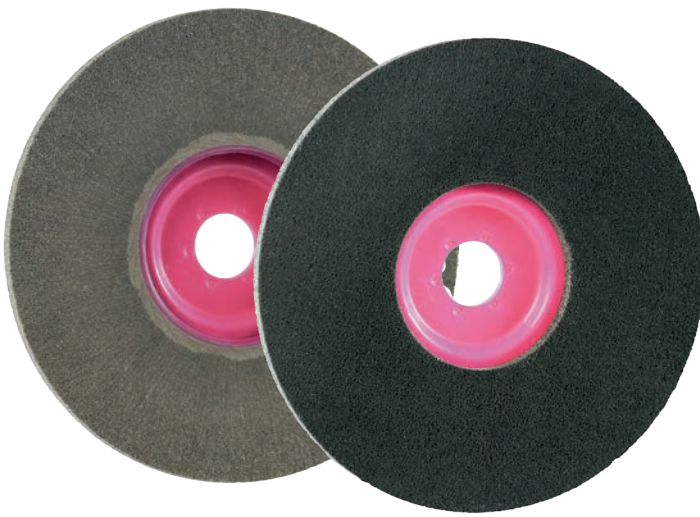
FIX SuperPolish Felt Disc

Special merino wool felt that produces a perfect, brilliant mirror finish on stainless steel and nonferrous metals. Use with our polishing compounds (white and blue) and pink cream to avoid smears and shadows.

Diameter: 4-1/2"; Thickness: 1/4", Part No. 80715 (10 pack)

Diameter: 6"; Thickness: 1/4", Part No. 80750 (10 pack)

When polishing with FIX SuperPolish Discs, use a separate SuperPolish disc for each compound and cream. The different compound grits *must not* be mixed. Remove compound and cream residues from the workpiece after each stage using PTX Brightex® Softclean Powder and a microfiber cloth.



POLY-MAGIC UNITIZED WHEEL

Dry polish stainless steel in corners up to a mirror finish!

The POLY-MAGIC-WHEEL is designed for finishing and dry polishing in corners, producing up to a perfect mirror finish in just two steps. These discs are composed of highly compressed fleece material, made by compressing single flaps that are then impregnated with foam for greater strength. This special process allows considerably more abrasive material to be used than on conventionally wound "unitized wheels and discs."

The POLY-MAGIC-WHEEL is ideal for grinding and polishing bead and corner welds. It may only be used frontally.



Polishing corner welds with the POLY-MAGIC-WHEEL

Obtaining good polish quality when finishing corner welds is difficult, especially for the fabrication of railings. The POLY-MAGIC-WHEEL was designed to help you more easily produce a truly perfect finish in these applications. This highly compacted fleece disc was designed specifically for grinding and polishing bead and corner welds.

Carry out the initial grinding and leveling of welds with the red disc, grit A (80 grit).

Then polish to a mirror finish using the POLY-MAGIC gray disc, grit B (900 grit). These discs are very aggressive and improve productivity. No polishing compounds or creams are required for polishing with the POLY-MAGIC-WHEEL (dry polish).

POLY-MAGIC-WHEEL

Dimensions 6 1/2" dia. x 7/8" arbor

Max. Speed 5000 RPM

Ideal Speed 3000 to 4000 RPM

A/80 (light gray): for initial grinding and leveling welds
(P/N 96720, 5 pk.)

B/900 (dark gray): for polishing to a perfect mirror finish
(P/N 96721, 5 pk.)

Mirror finish in 2 steps:



1 POLY-MAGIC-WHEEL A (80 grit)



2 POLY-MAGIC-WHEEL B (900 grit)



MAGNUM® TOPMIX

Increased material removal, longer service life.

The MAGNUM® TOPMIX was developed to increase material removal during finishing while also improving service life. The 80 combination grit is much more aggressive than our MAGNUM® FLEECE TOP 80 grit (see next page). Individual flaps with foamed and compressed fleece offer a much higher removal capacity, making it ideal for removing spot welds and deep scratches on stainless steel, steel and nonferrous metals. The coordinated fleece combination additionally ensures that a good finish is achieved. The MAGNUM® TOPMIX also offers excellent service life, making deburring and cleaning of cast parts and welds a breeze.

Ideal for speed-controlled angle grinders.

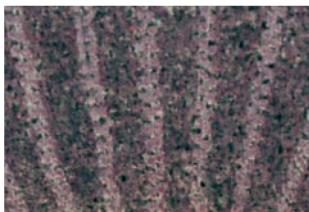
MAGNUM® TOPMIX

Dimensions 5 dia. x 7/8" arbor

Max. Speed 6000 RPM

Ideal Speed 2000 to 4500 RPM

Grits 40/80 (P/N 96705, 5 pk.)



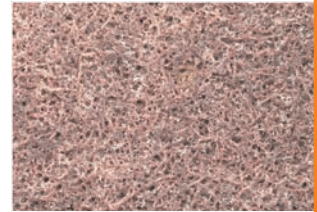
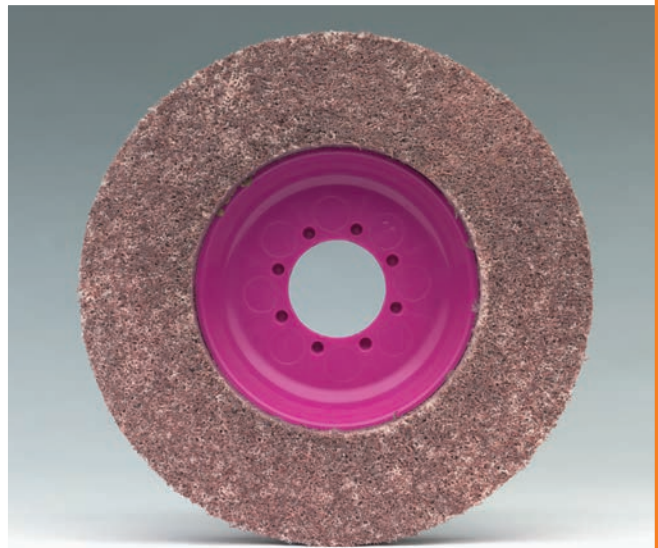
MAGNUM® FLEECE TOP

Made of foamed, compressed grit, interspersed nonwoven fleece.

The MAGNUM® FLEECE TOP is a versatile fleece disc for surface conditioning, fine finishing and polishing, offering up to 8x the service life of traditional fleece and surface conditioning discs. The FLEECE TOP is an ideal disc for metalworking that requires fine grinding and pre-polishing to a uniform clean finish. It is effective at descaling and removing oxidation, scratches, rust, burrs and paint. It replaces a wire brush, abrasive paper and grinding rubbers and is self cleaning, with a special mixture that prevents glazing and loading. The foamed fleece ring is approx. 5/8" thick. This highly compressed quantity of fleece material ensures an extra-long service life.

Ideal for speed-controlled angle grinders.

MAGNUM® FLEECE TOP	
Dimensions	4 1/2" dia. x 7/8" arbor
Max. Speed	8000 RPM
Ideal Speed	2000 to 4500 RPM
Grits	80 (P/N 96710, 5 pk.)
	180 (P/N 96711, 5 pk.)
	280 (P/N 96712, 5 pk.)
	400 (P/N 96713, 5 pk.)
	600 (P/N 96714, 5 pk.)
	900 (P/N 96715, 5 pk.)



Scan to
Learn More



MAGNUM® CLEAN

For pore-deep cleaning of metals
(sandblasting effect).

MAGNUM CLEAN® is a flexible cleaning disc for the pore-deep cleaning of metals. This flexible coarse fleece disc is interspersed with silicon carbide grit and cleans without harming the base material. The disc itself is iron free, which means that there is no risk of corrosion. The coarse fleece material will not glaze or load, even if exposed to heavy contamination. MAGNUM CLEAN® is the ideal cleaning disc for pore-deep removal of paint, rust, scale and oil smears, as well as for cleaning and exposing without material removal. It is ideal for use in body shops (cleans thin sheet metal with no material removal) and in the automotive industry, and it is also suitable for undersealing, renovating, painting and building work. MAGNUM CLEAN® is particularly good for removing paint and other coatings on wood, stone and metal (including window frames, doors and frames, furniture, house facades, graffiti, railings, fences, supports and machines).

Ideal for speed-controlled angle grinders.

MAGNUM® CLEAN	
Dimensions	5 dia. x 7/8" arbor
Max. Speed	5000 RPM
Ideal Speed	2000 to 4500 RPM
Grits	Medium (P/N 96700, 5 pk.)

